



SIX WEST
LUXURY DISTRICT





SODIC SOCIETY

Building on a history of almost two decades of successful operation in Egypt, SODIC brings to the market award-winning large scale developments, meeting Egypt's ever growing need for high quality housing, commercial and retail spaces. We pride ourselves on our passion for excellence and commitment to fostering long-term relationships with our clients, shareholders, business partners and employees, which has helped us grow to the corporation we are today.



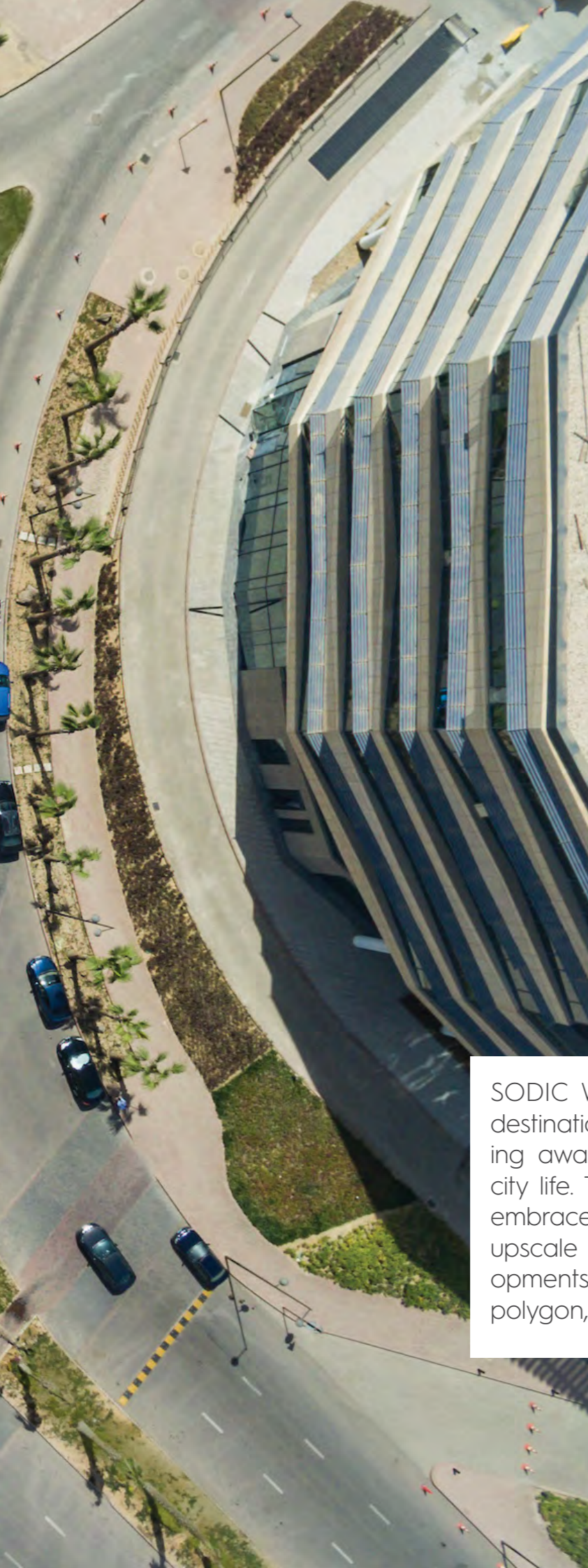




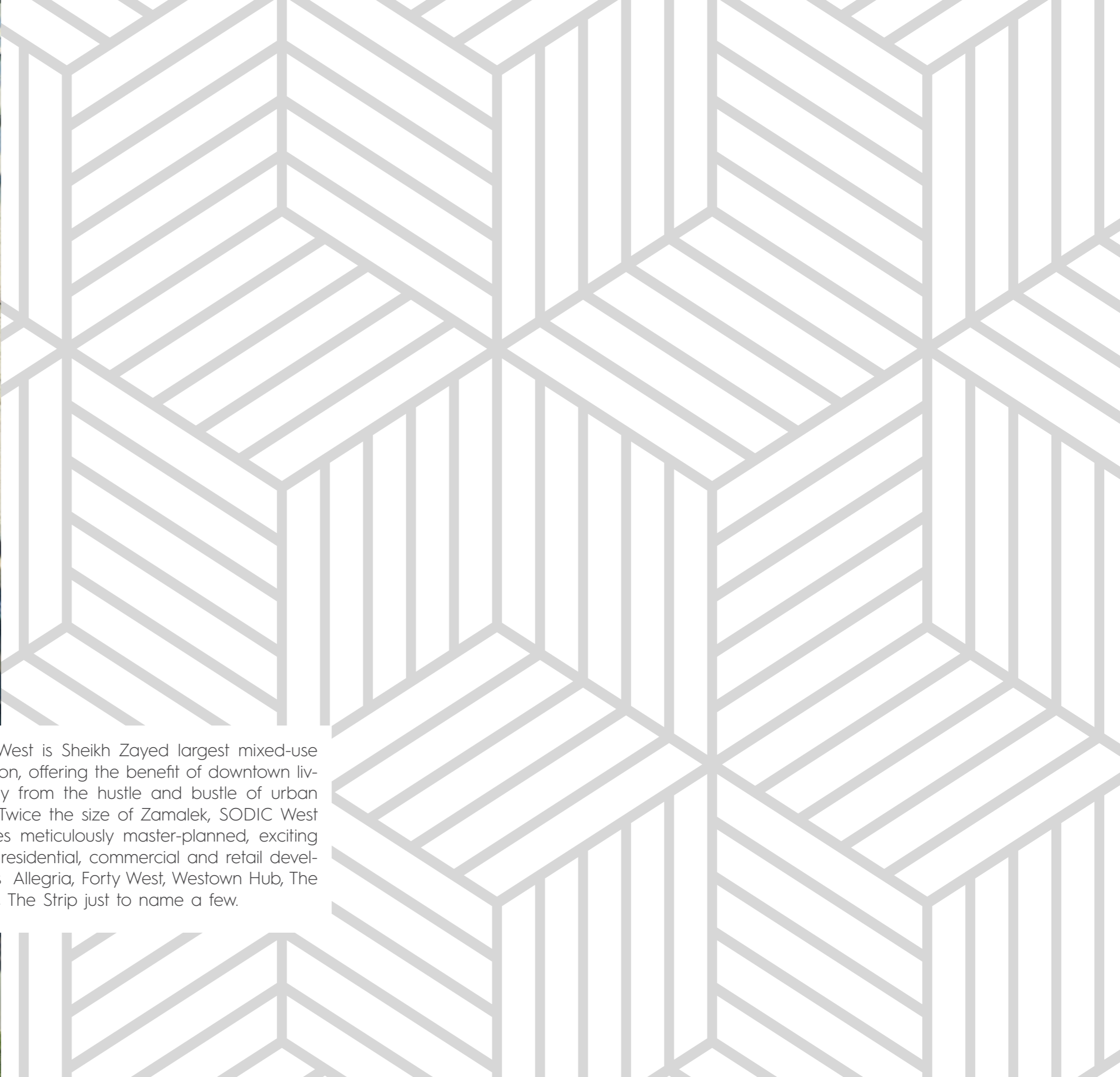
SODIC WEST

6 SIX WEST





SODIC West is Sheikh Zayed largest mixed-use destination, offering the benefit of downtown living away from the hustle and bustle of urban city life. Twice the size of Zamalek, SODIC West embraces meticulously master-planned, exciting upscale residential, commercial and retail developments Allegria, Forty West, Westtown Hub, The polygon, The Strip just to name a few.



SIX WEST





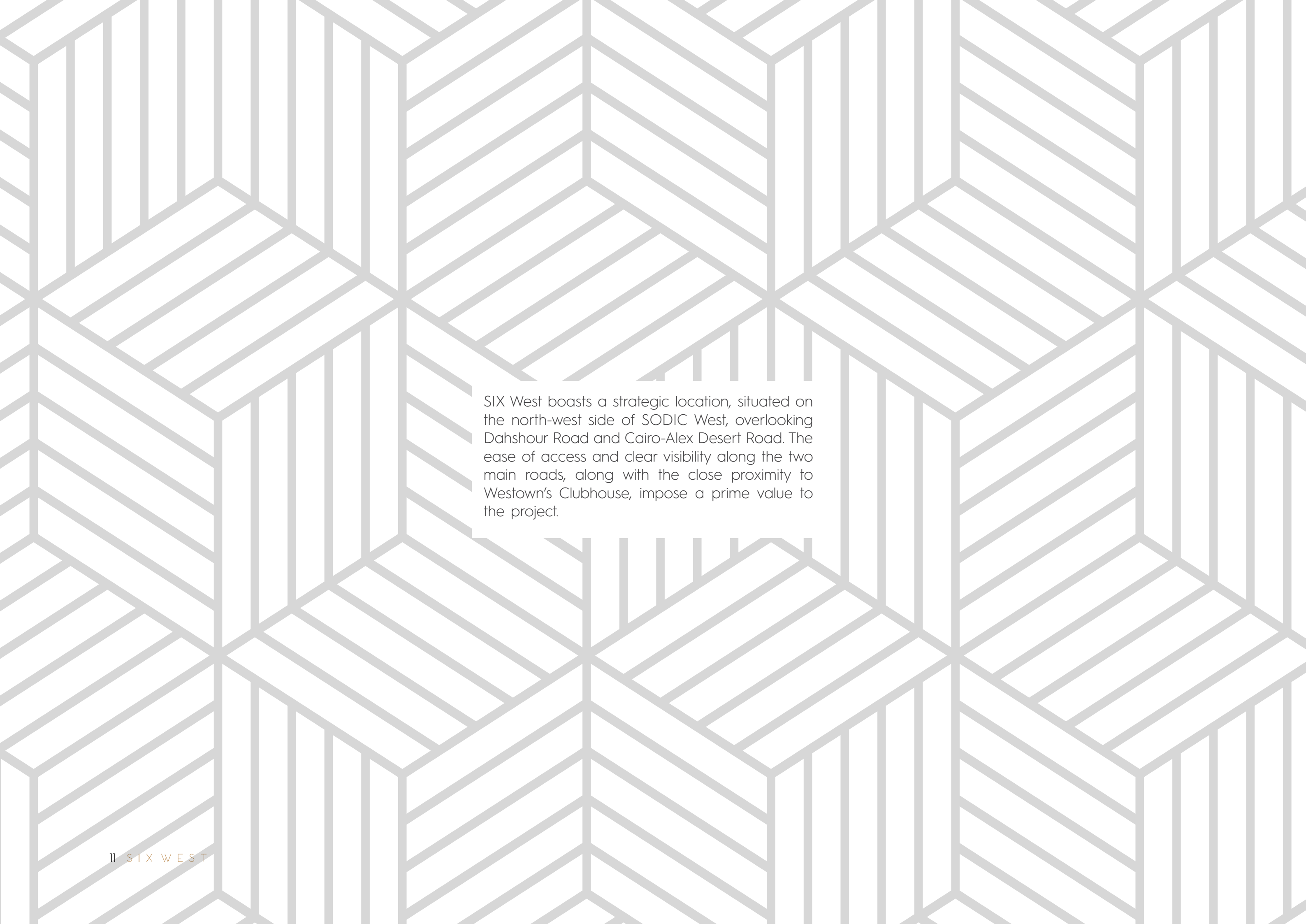
SIX West completes the pillars of SODIC West in the North West corner as the mixed-use destination that capitalizes on the retail, commercial and residential components in addition to its proximity to the SODIC Sports Club, providing the owners a full sustained and well serviced development.

SIX West is meticulously designed around a central piazza. Both homes and offices promise exclusiveness and privacy. It is carefully planned to maintain the concept of the promenade and provide exclusive wide open views of the clubhouse with maximum wind exposure during the Egyptian summer heat.

The piazza generates an enclosed space unifying the office and residential elements and providing a public space that will become a focal point within SODIC west, and a catalyst for community activity.

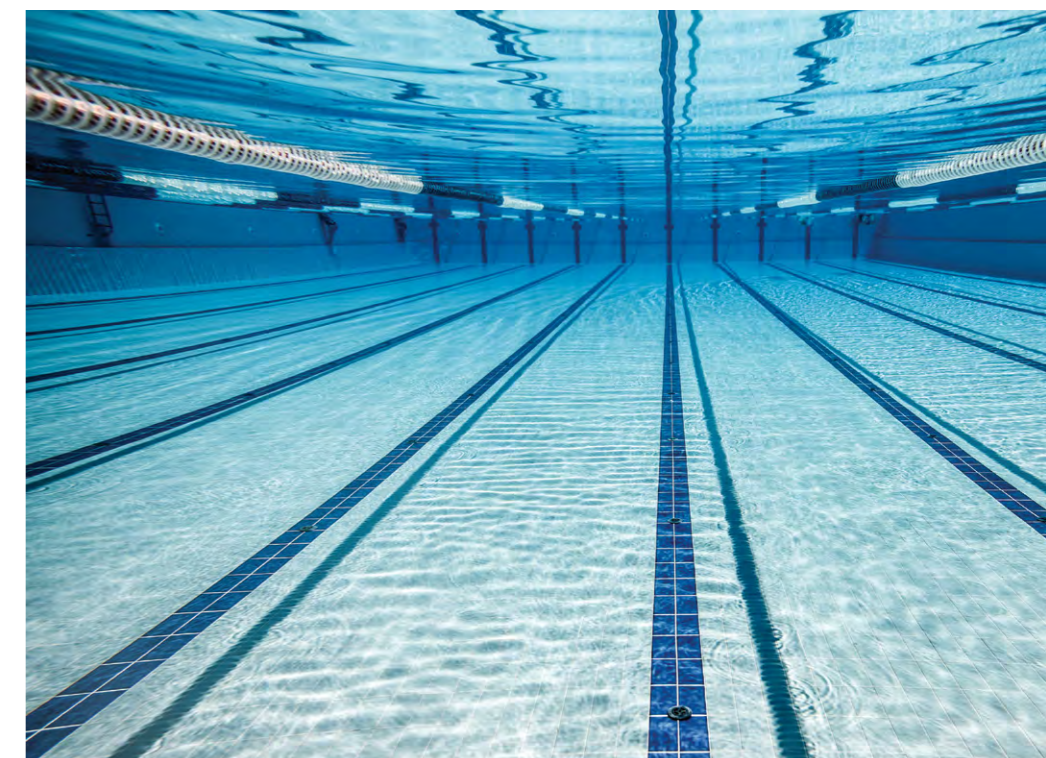
LOCATION





SIX West boasts a strategic location, situated on the north-west side of SODIC West, overlooking Dahshour Road and Cairo-Alex Desert Road. The ease of access and clear visibility along the two main roads, along with the close proximity to Westown's Clubhouse, impose a prime value to the project.

SODIC SPORTS CLUB



SODIC created a momentum for the community with SODIC Sports platform, transforming the way people live and work and the strength to achieve their full potential in their everyday lifestyle.

Starting off with our first of five clubs, SODIC Sports Club in SODIC West. We have already launched our athletic zone which offers various sports facilities such as football, tennis, basketball, volleyball, and a fitness arena all in which are currently operated by top operators within the region.

Having a clubhouse in the Sports Club, offers plenty of social activities for family and friends to enjoy. The members will experience its various high end facilities from pools, kids play zone, gym, squash courts, and food & beverage outlets.



RESIDENTIAL





The residential component is envisioned to become an exclusive offering with premium and unparalleled views. Homes will either enjoy an open view overlooking the green fields of the SODIC Sports Club, or the central open piazza.

The residential component offers seven buildings along the periphery adjacent to The SODIC Sports Club and the inner residential and commercial piazza. These exclusive homes vary from two to three bedrooms which benefit from underground basement and storage.



RETAIL

SIX West retail is envisioned to be a pedestrian friendly development that cultivates a creative environment and complements the retail promenade along road B, enhancing the experience of those working, visiting or living.

This will be achieved and reflected through the design and architecture, by making it easily accessible and connected, with outdoor spaces rich in greenery. The Piazza is positioned as the nucleus of the project, around which all project elements and activities will blossom.

SIX West will provide a breathing space not only to the project but also to the entire community, with food and beverage stores lining the piazza and adequate shaded areas and seating structures.



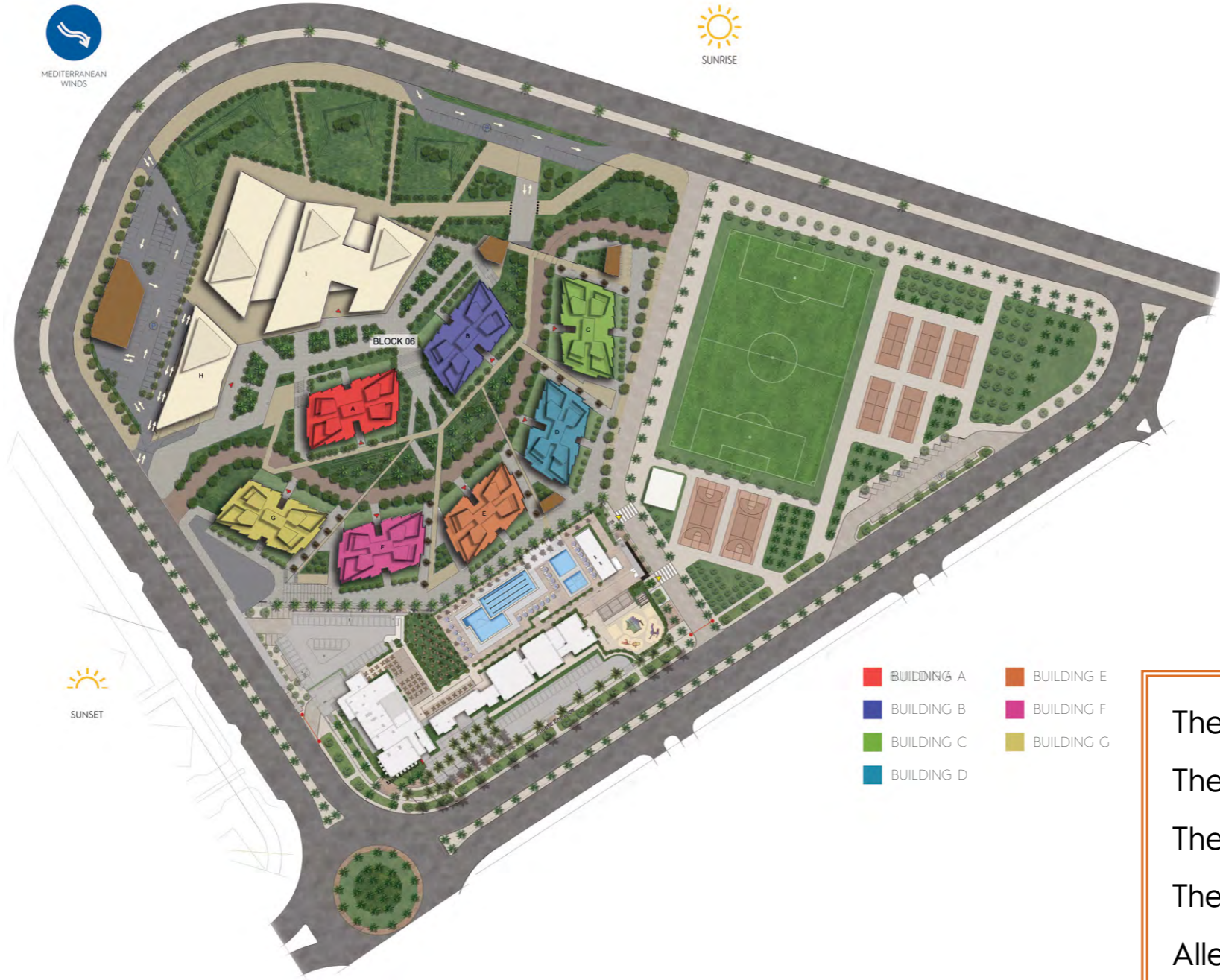
MASTER-PLAN



The master Plan was envisioned to maximize the views on the SODIC Sports Club, the business piazza, and the residential piazza to offer the open landscape areas and outdoor, that allow for recreational living.

The business park shall act as a buffer for the residential from the North West part, in addition to the green buffer to the north area of the project.

The twist in the architectural design is reflected in the elevations with a dynamic feel and a unique identity that complements the SODIC Sports Club with its activities and vibrancy. It's designed to provide both open views and privacy along with a modern design and responsive elements to climate.



- BUILDING A
- BUILDING B
- BUILDING C
- BUILDING D
- BUILDING E
- BUILDING F
- BUILDING G

- The Westtown Clubhouse 50 m
- The Westtown Business Park 400 m
- The Westtown HUB 600 m
- The British International School 700 m
- Allegria Signature Golf course 100 m
- Westtown Medical Center 500 m
- Mosque 800 m
- Church 700m

FLOORPLANS



BUILDING A-B

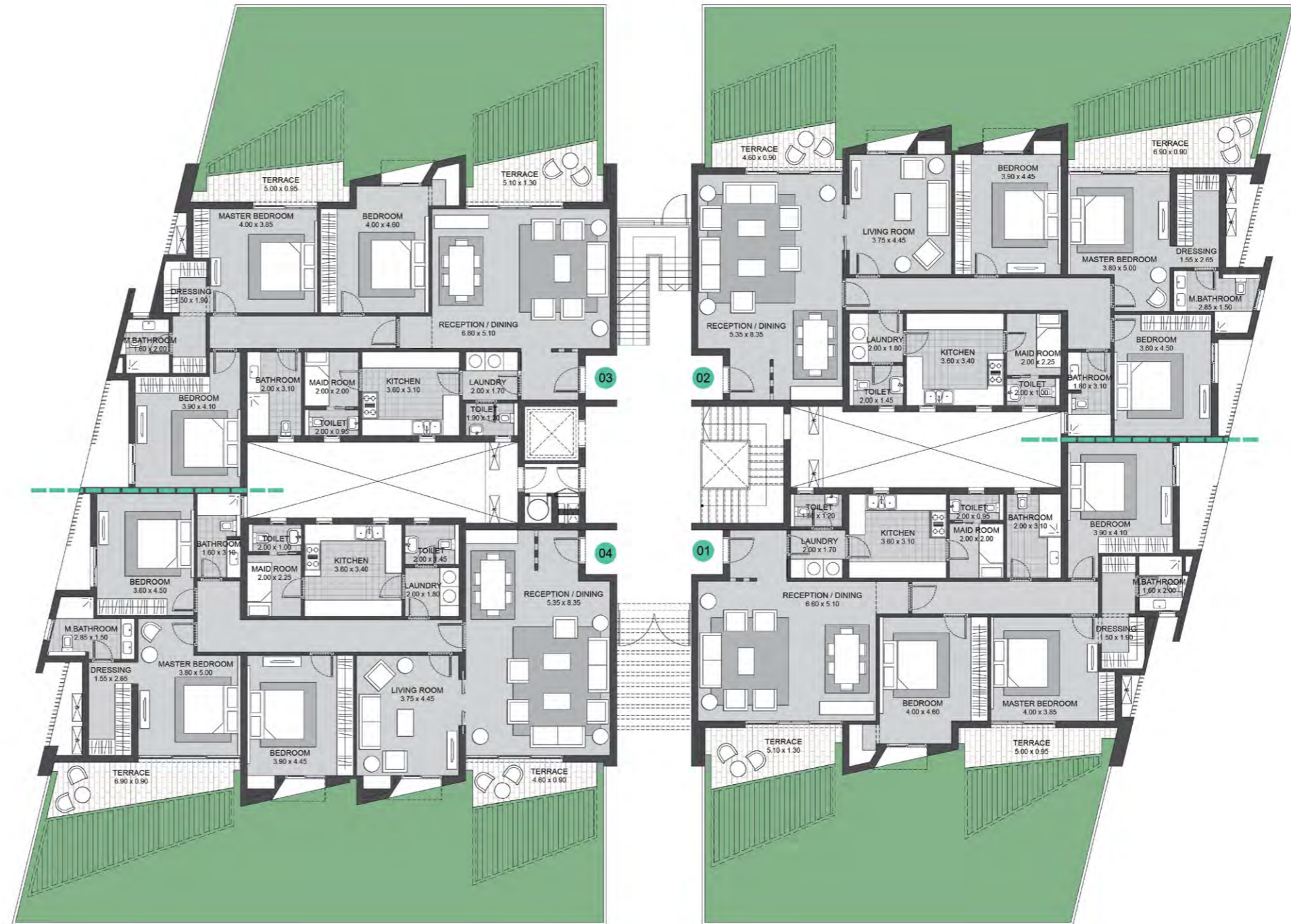
TYPE 01

UNIT-01 3 BEDROOM TYPE 2
TOTAL GROSS AREA: 196M²

UNIT-02 3 BEDROOM + FAMILY
TOTAL GROSS AREA: 231M²

UNIT-03 3 BEDROOM TYPE 2
TOTAL GROSS AREA: 196M²

UNIT-04 3 BEDROOM + FAMILY
TOTAL GROSS AREA: 231M²



GROUND FLOOR

BUILDING A-B

TYPE 01

UNIT-11 3 BEDROOM TYPE 2
TOTAL GROSS AREA: 196M²

UNIT-12 3 BEDROOM + FAMILY
TOTAL GROSS AREA: 231M²

UNIT-13 3 BEDROOM TYPE 2
TOTAL GROSS AREA: 196M²

UNIT-14 3 BEDROOM + FAMILY
TOTAL GROSS AREA: 231M²



FIRST FLOOR

BUILDING A-B

TYPE 01

UNIT-21 3 BEDROOM TYPE 2
TOTAL GROSS AREA: 196M²

UNIT-22 3 BEDROOM + FAMILY
TOTAL GROSS AREA: 231M²

UNIT-23 3 BEDROOM TYPE 2
TOTAL GROSS AREA: 196M²

UNIT-24 3 BEDROOM + FAMILY
TOTAL GROSS AREA: 231M²



SECOND FLOOR

BUILDING A-B

TYPE 01

UNIT-31 3 BEDROOM TYPE 2
LOWER LEVEL: 196M²
ROOF SUIT: 40M²
TOTAL GROSS AREA: 236M²
ROOF AREA: 118M²

UNIT-32 3 BEDROOM + FAMILY
LOWER LEVEL: 231M²
ROOF SUIT: 42M²
TOTAL GROSS AREA: 274M²
ROOF AREA: 149M²

UNIT-33 3 BEDROOM TYPE 2
LOWER LEVEL: 196M²
ROOF SUIT: 40M²
TOTAL GROSS AREA: 236M²
ROOF AREA: 118M²

UNIT-34 3 BEDROOM + FAMILY
LOWER LEVEL: 231M²
ROOF SUIT: 42M²
TOTAL GROSS AREA: 274M²
ROOF AREA: 149M²



THIRD FLOOR

BUILDING A-B

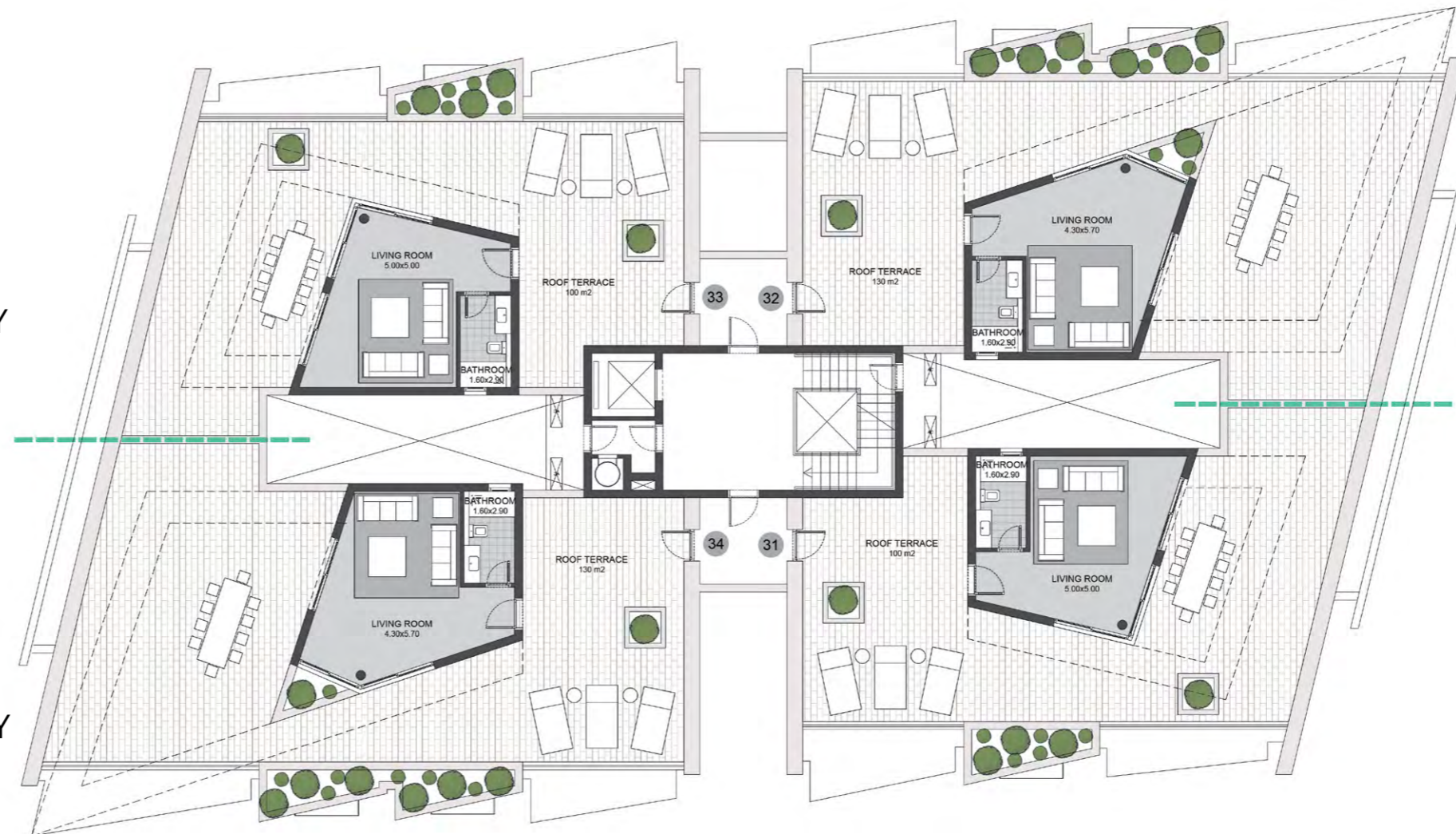
TYPE 01

UNIT-31 3 BEDROOM TYPE 2
ROOF SUIT: 40M²
TOTAL GROSS AREA: 236M²
ROOF AREA: 118M²

UNIT-32 3 BEDROOM + FAMILY
ROOF SUIT: 42M²
TOTAL GROSS AREA: 274M²
ROOF AREA: 149M²

UNIT-33 3 BEDROOM TYPE 2
ROOF SUIT: 40M²
TOTAL GROSS AREA: 236M²
ROOF AREA: 118M²

UNIT-34 3 BEDROOM + FAMILY
ROOF SUIT: 42M²
TOTAL GROSS AREA: 274M²
ROOF AREA: 149M²



ROOF FLOOR

BUILDING C

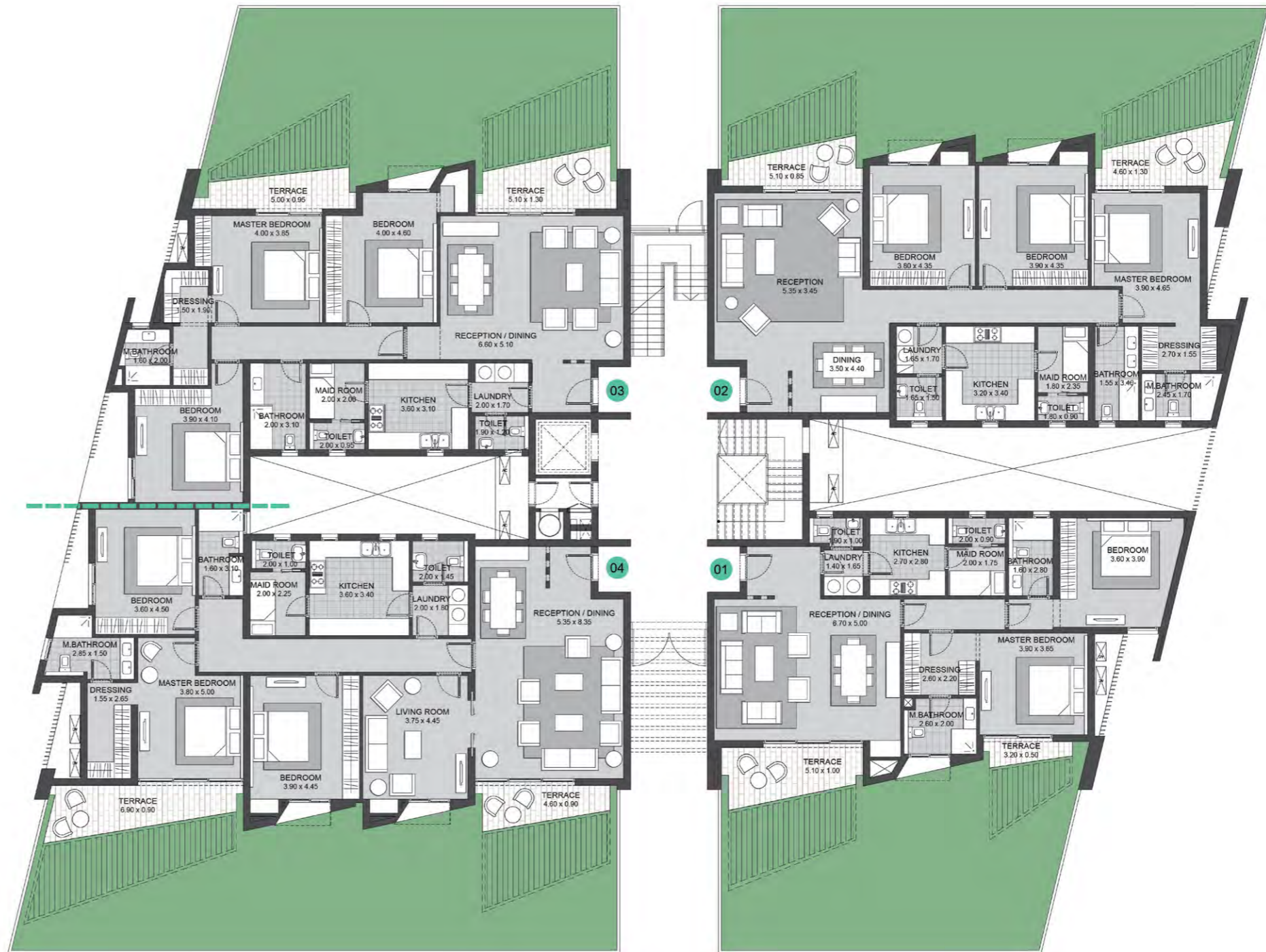
TYPE 2B

UNIT-01 2 BEDROOM
TOTAL GROSS AREA: 156M²

UNIT-02 3 BEDROOM TYPE 1
TOTAL GROSS AREA: 202M²

UNIT-03 3 BEDROOM TYPE 2
TOTAL GROSS AREA: 198M²

UNIT-04 3 BEDROOM + FAMILY
TOTAL GROSS AREA: 233M²



GROUND FLOOR

BUILDING C

TYPE 2B

UNIT-11 2 BEDROOM
TOTAL GROSS AREA: 156M²

UNIT-12 3 BEDROOM TYPE 1
TOTAL GROSS AREA: 202M²

UNIT-13 3 BEDROOM TYPE 2
TOTAL GROSS AREA: 198M²

UNIT-14 3 BEDROOM + FAMILY
TOTAL GROSS AREA: 233M²



FIRST FLOOR

BUILDING C

TYPE 2B

UNIT-21 2 BEDROOM
TOTAL GROSS AREA: 156M²

UNIT-22 3 BEDROOM TYPE 1
TOTAL GROSS AREA: 202M²

UNIT-23 3 BEDROOM TYPE 2
TOTAL GROSS AREA: 198M²

UNIT-24 3 BEDROOM + FAMILY
TOTAL GROSS AREA: 233M²



SECOND FLOOR

BUILDING C

TYPE 2B

UNIT-31 2 BEDROOM
LOWER LEVEL: 156M²
ROOF SUIT: 38M²
TOTAL GROSS AREA: 194M²
ROOF AREA: 86M²

UNIT-32 3 BEDROOM
LOWER LEVEL: 202M²
ROOF SUIT: 41M²
TOTAL GROSS AREA: 243M²
ROOF AREA: 116M²

UNIT-33 3 BEDROOM TYPE 2
LOWER LEVEL: 198M²
ROOF SUIT: 40M²
TOTAL GROSS AREA: 238M²
ROOF AREA: 118M²

UNIT-34 3 BEDROOM + FAMILY
LOWER LEVEL: 233M²
ROOF SUIT: 43M²
TOTAL GROSS AREA: 276M²
ROOF AREA: 149M²



THIRD FLOOR

BUILDING C

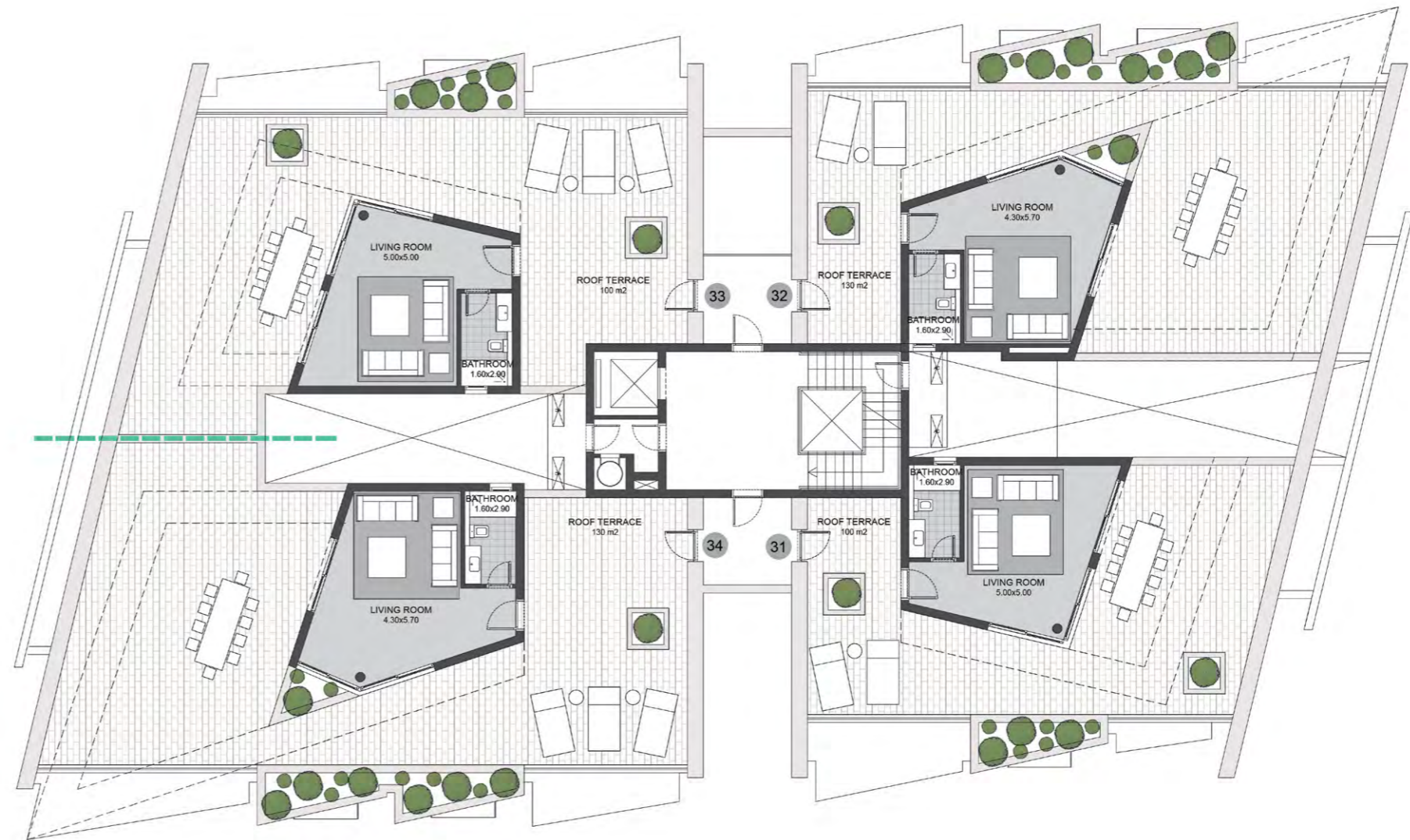
TYPE 2B

UNIT-31 2 BEDROOM
ROOF SUIT: 38M²
TOTAL GROSS AREA: 194M²
ROOF AREA: 86M²

UNIT-32 3 BEDROOM TYPE 1
ROOF SUIT: 41M²
TOTAL GROSS AREA: 243M²
ROOF AREA: 116M²

UNIT-33 3 BEDROOM TYPE 2
ROOF SUIT: 40M²
TOTAL GROSS AREA: 238M²
ROOF AREA: 118M²

UNIT-34 3 BEDROOM + FAMILY
ROOF SUIT: 43M²
TOTAL GROSS AREA: 276M²
ROOF AREA: 149M²



ROOF FLOOR

BUILDING D-E-F

TYPE 3

UNIT-01 2 BEDROOM
TOTAL GROSS AREA: 158M²

UNIT-02 3 BEDROOM TYPE 1
TOTAL GROSS AREA: 204M²

UNIT-03 2 BEDROOM
TOTAL GROSS AREA: 158M²

UNIT-04 3 BEDROOM TYPE 1
TOTAL GROSS AREA: 204M²



GROUND FLOOR

BUILDING D-E-F

TYPE 3

UNIT-11 2 BEDROOM
TOTAL GROSS AREA: 158M²

UNIT-12 3 BEDROOM TYPE 1
TOTAL GROSS AREA: 204M²

UNIT-13 2 BEDROOM
TOTAL GROSS AREA: 158M²

UNIT-14 3 BEDROOM TYPE 1
TOTAL GROSS AREA: 204M²



FIRST FLOOR

BUILDING D-E-F

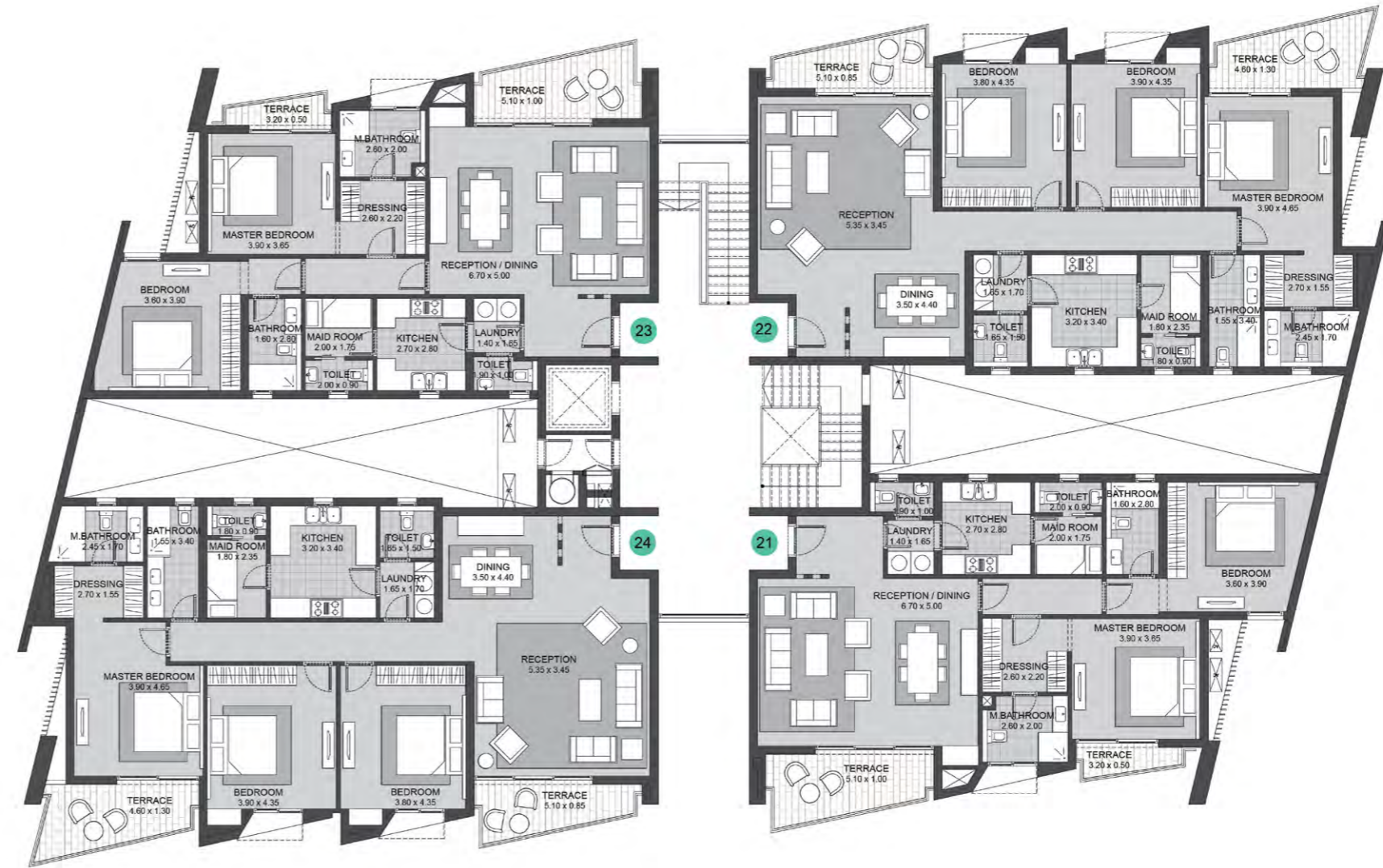
TYPE 3

UNIT-21 2 BEDROOM
TOTAL GROSS AREA: 158M²

UNIT-22 3 BEDROOM TYPE 1
TOTAL GROSS AREA: 204M²

UNIT-23 2 BEDROOM
TOTAL GROSS AREA: 158M²

UNIT-24 3 BEDROOM TYPE 1
TOTAL GROSS AREA: 204M²



SECOND FLOOR

BUILDING D-E-F

TYPE 3

UNIT-31 2 BEDROOM
LOWER LEVEL: 158M²
ROOF SUIT: 38M²
TOTAL GROSS AREA: 196M²
ROOF AREA: 86M²

UNIT-32 3 BEDROOM TYPE 1
LOWER LEVEL: 204M²
ROOF SUIT: 41M²
TOTAL GROSS AREA: 245M²
ROOF AREA: 116M²

UNIT-33 2 BEDROOM
LOWER LEVEL: 158M²
ROOF SUIT: 38M²
TOTAL GROSS AREA: 196M²
ROOF AREA: 86M²

UNIT-34 3 BEDROOM TYPE 1
LOWER LEVEL: 204M²
ROOF SUIT: 41M²
TOTAL GROSS AREA: 245M²
ROOF AREA: 116M²



THIRD FLOOR

BUILDING D-E-F

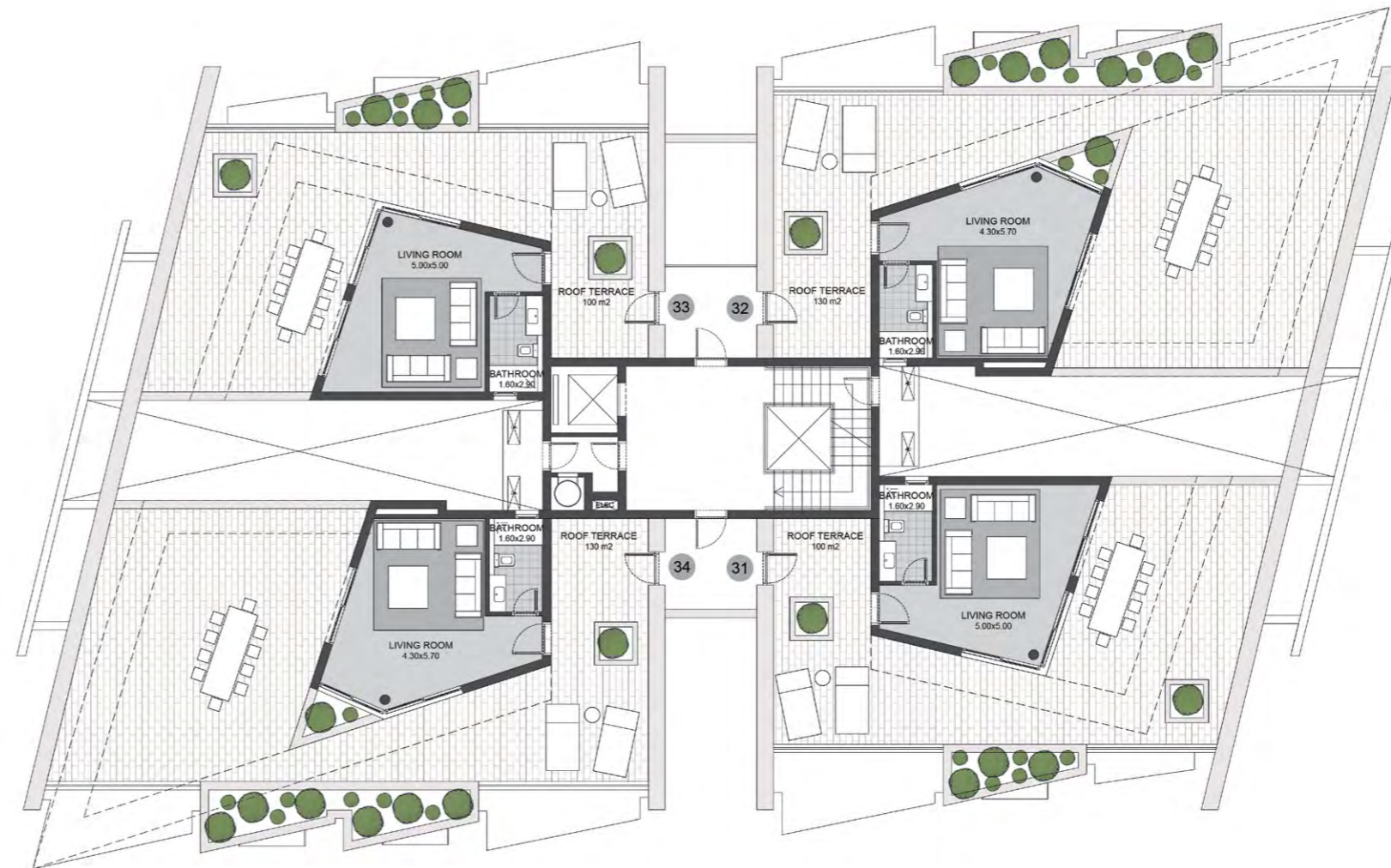
TYPE 3

UNIT-31 2 BEDROOM
ROOF SUIT: 38M²
TOTAL GROSS AREA: 196M²
ROOF AREA: 86M²

UNIT-32 3 BEDROOM TYPE 1
ROOF SUIT: 41M²
TOTAL GROSS AREA: 245M²
ROOF AREA: 116M²

UNIT-33 2 BEDROOM
ROOF SUIT: 38M²
TOTAL GROSS AREA: 196M²
ROOF AREA: 86M²

UNIT-34 3 BEDROOM TYPE 1
ROOF SUIT: 41M²
TOTAL GROSS AREA: 245M²
ROOF AREA: 116M²



ROOF FLOOR

BUILDING G

TYPE 2A

UNIT-01 3 BEDROOM TYPE 2
TOTAL GROSS AREA: 198M²

UNIT-02 3 BEDROOM + FAMILY
TOTAL GROSS AREA: 233M²

UNIT-03 2 BEDROOM
TOTAL GROSS AREA: 156M²

UNIT-04 3 BEDROOM TYPE 1
TOTAL GROSS AREA: 202M²



GROUND FLOOR

BUILDING G

TYPE 2A

UNIT-11 3 BEDROOM TYPE 2
TOTAL GROSS AREA: 198M²

UNIT-12 3 BEDROOM + FAMILY
TOTAL GROSS AREA: 233M²

UNIT-13 2 BEDROOM
TOTAL GROSS AREA: 156M²

UNIT-14 3 BEDROOM TYPE 1
TOTAL GROSS AREA: 202M²



FIRST FLOOR

BUILDING G

TYPE 2A

UNIT-21 3 BEDROOM TYPE 2
TOTAL GROSS AREA: 198M²

UNIT-22 3 BEDROOM + FAMILY
TOTAL GROSS AREA: 233M²

UNIT-23 2 BEDROOM
TOTAL GROSS AREA: 156M²

UNIT-24 3 BEDROOM TYPE 1
TOTAL GROSS AREA: 202M²



SECOND FLOOR

BUILDING G

TYPE 2A

UNIT-31 3 BEDROOM TYPE 2
LOWER LEVEL: 198M²
ROOF SUIT: 40M²
TOTAL GROSS AREA: 238M²
ROOF AREA: 118M²

UNIT-32 3 BEDROOM + FAMILY
LOWER LEVEL: 233M²
ROOF SUIT: 43M²
TOTAL GROSS AREA: 276M²
ROOF AREA: 149M²

UNIT-33 2 BEDROOM
LOWER LEVEL: 156M²
ROOF SUIT: 38M²
TOTAL GROSS AREA: 194M²
ROOF AREA: 86M²

UNIT-34 3 BEDROOM TYPE 1
LOWER LEVEL: 202M²
ROOF SUIT: 41M²
TOTAL GROSS AREA: 243M²
ROOF AREA: 116M²



THIRD FLOOR

BUILDING G

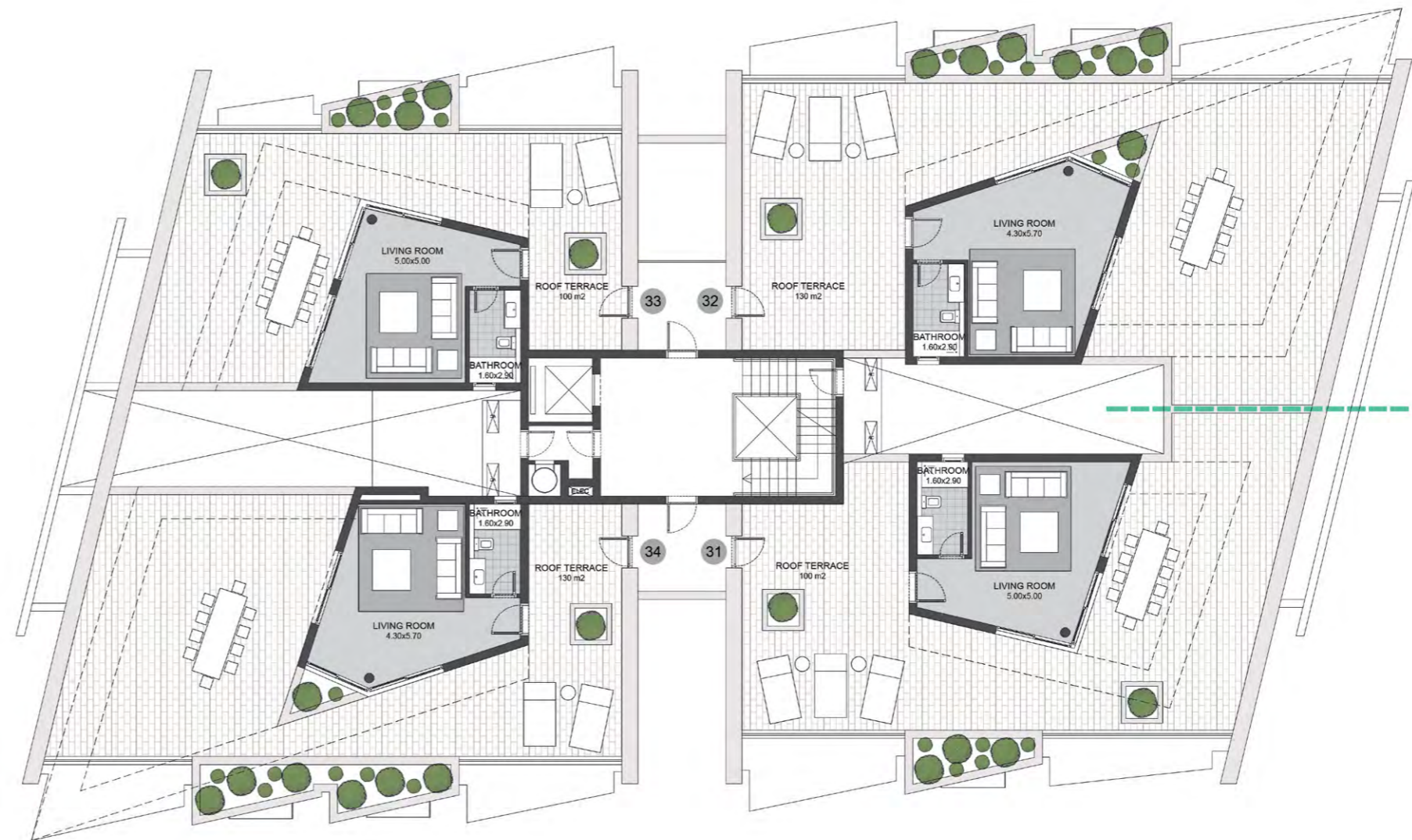
TYPE 2A

UNIT-31 3 BEDROOM TYPE 2
ROOF SUIT: 40M²
TOTAL GROSS AREA: 238M²
ROOF AREA: 118M²

UNIT-32 3 BEDROOM + FAMIL
ROOF SUIT: 43M²
TOTAL GROSS AREA: 276M²
ROOF AREA: 149M²

UNIT-33 2 BEDROOM
ROOF SUIT: 38M²
TOTAL GROSS AREA: 194M²
ROOF AREA: 86M²

UNIT-34 3 BEDROOM TYPE 1
ROOF SUIT: 41M²
TOTAL GROSS AREA: 243M²
ROOF AREA: 116M²



ROOF FLOOR

